

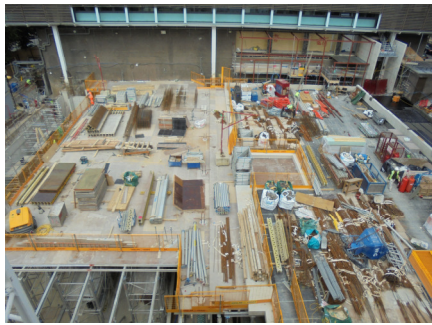
News Bulletin



Issue 9 – August 2015

Programme Update

Since our last Bulletin was issued we have continued to make excellent progress with the works on site.



The Art Block has seen the biggest transformation with the structure completed, the curtain walling and stonework progressing well and the internal fit out of the teaching spaces taking shape.

We are currently on target to complete the Art Block with the external scaffold due to be removed by the end of October.

The pool structure has been formed with the pool roof and playground works taking shape above.

Internal works to the Fitness block have also commenced and are progressing nicely.



Next 4 Weeks



Over the next 4 weeks we will be continuing with the final phases of work to the Art Block, progressing with the pool roof construction and commencing with the next phase of the internal fit out works to the Fitness block.



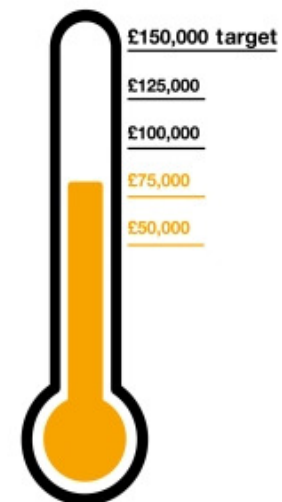
We will also commence with the initial works to the playground construction and external landscaping.

The major plant has now been installed and the mechanical and electrical connections within the plant room will be progressed.

Community

ISG is a considerate contractor dedicated to giving back to the community. This year ISG is supporting CARE International to help people find routes out of poverty. The money we raise will help CARE fight poverty and injustice in more than 80 countries around the world. CARE

Our contribution target



also delivers emergency aid to survivors of war and natural disasters, and helps people rebuild their lives in the aftermath. Every donation counts and at least 83p in every £1 is spent on CARE's poverty fighting programmes. Some of our employees took part in the Construction



challenge requiring them to participate in different physical challenges to raise funds for charity.

If you would like to participate and donate to CARE you can visit this web link here:

<https://www.justgiving.com/company/isg>



We have had **good feedback** from all our neighbours regarding our good traffic management, and procedures put in place to minimise the blockage of roads surrounding the construction site. We couldn't have done this without your support and feedback.

Art Block

We have worked **492,450** man hours on site since June 2014.

The crane on site is soaring **28 metres** high into the sky! That's equivalent to 6 double Decker London busses stacked on top of each other.

An average of **70 stones per week** is being installed on the Art Building facade.



The Art Block comprises of four floors and a green roof. It aims to achieve a BREEAM sustainability grade of 'Very Good' due to its natural ventilation system and concrete structure. It is

currently being fitted out for use by the students in January 2016.



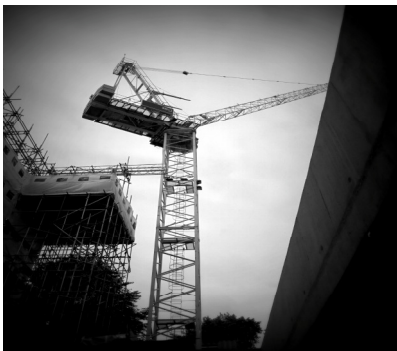
The Art Building facade will be clad with a Portuguese stone which was cut by lasers in the UK. Our stone subcontractors are working hard and have laid more than ½ the stone which should be complete by October.

The Art Building will be seen from Grove End Road when completed. It will house teaching spaces for the high school students at ASL such as Art galleries, Art Studios, ceramics room and a dark room for photography.

Site BBQ



ISG with the support and contributions of ASL set up a site BBQ for everyone on site to celebrate the topping out of the Art Building. A BBQ was set up on the new playground slab and regardless of the showers; it was an enjoyable atmosphere with everyone present.



Welcome Back!

ISG would like to welcome back all the students at The American School of London and The Arnold House Primary School after their summer holiday break!

We hope it was as much enjoyable as it was productive.

ASL high school students went back to classes on Monday, 24 August, and the lower and middle school students on Tuesday, 25 August. Arnold House students will commence on the 7th of September. We wish them a successful and productive academic year ahead of them



Please feel free to call the number highlighted below if there are any issues you wish to discuss and we will endeavour to address these as quickly as possible.

Site Phone Number:

0207 7482664

Project Director

Eamon Rafferty

Senior Construction Manager

Derek Haran

Assistant Construction Manager

Marius Skrabulis