

Ashworth 2 Refurbishment

ISG

Site newsletter

September 2014

Welcome

We are writing to inform you that ISG has been appointed to the refurbishment of the Ashworth 2 building. We will be issuing regular updates on our progress through newsletters, and through our project website which can be found at www.isgplc.com/ashworthbuilding

Details of our team are shown in the next column. Please do not hesitate to get in touch with them if you have any queries about this project.

The project

We will be carrying out a phased refurbishment of the 1st, 2nd and 3rd floors of Ashworth 2, with works commencing on the 3rd floor. On each floor we will be forming new office and laboratory space. Following the completion of the each floor we will cease operations to allow staff and students to move into the refurbished space, and for preparatory works to be carried out on the next floor.

Programme

The project will be carried out in phases as follows:

Phase 1: September 2014 to May 2015.

Phase 2: August 2015 to March 2016

Phase 3: July 2016 to February 2017

Site opening hours

The opening hours are below. If there are any changes to these we will ensure that you are kept up to date.

Monday to Friday:	07:30 to 17:30
Saturday:	08:00 to 16:00 (as required)
Sunday:	08:00 to 16:00 (as required)

Our team

Site Manager



Stuart Coutts

stuart.coutts@isgplc.com

07964 645 164

Senior Contracts Manager



Allan Currie

Allan.currie@isgplc.com

07581 164 045

Senior Surveyor



Nik Sturrock

Nik.sturrock@isgplc.com

07725 705 772

Considerate Constructors Scheme

ISG is a founder member of the Considerate Constructors Scheme (CCS), and we have engaged successfully with the scheme for many years. The CCS is a national initiative which aims to promote improvement within the construction industry by encouraging best practise beyond statutory requirements.

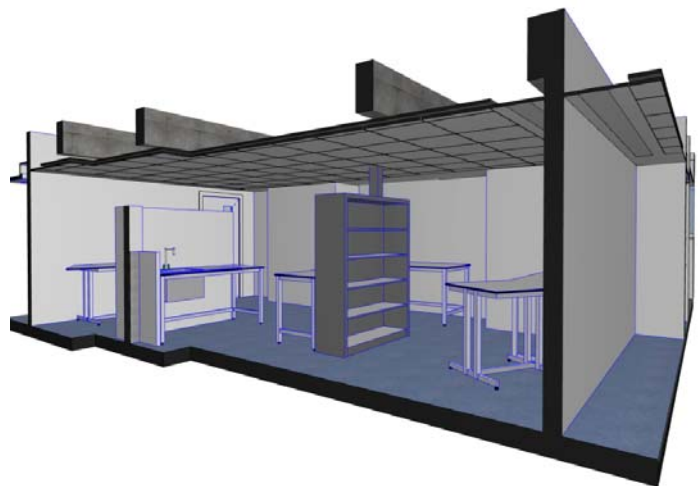
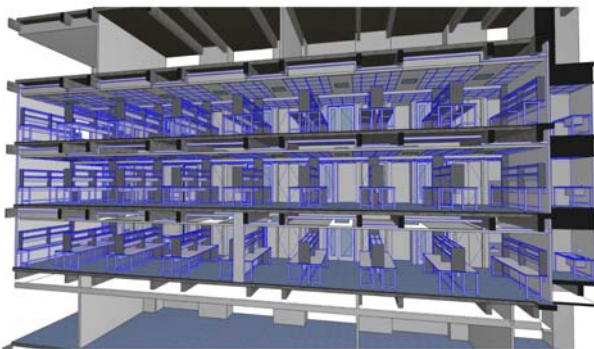
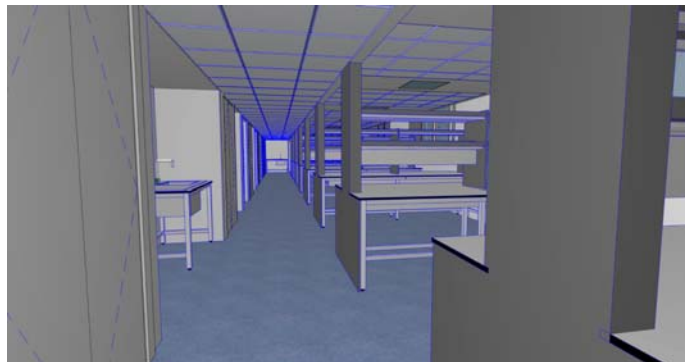
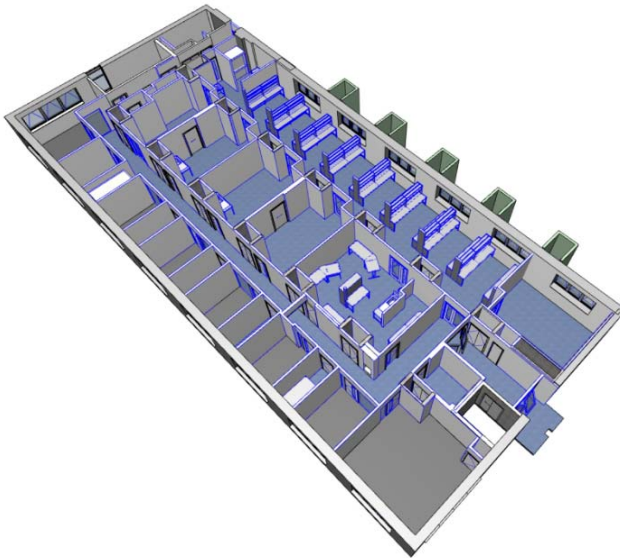


The Ashworth Building is registered with the CCS and we will ensure that our project complies with the five aims of the scheme:

- Care about appearance
- Respect the community
- Protect the environment
- Secure everyone's safety
- Value our workforce

What the project will look like

As the project continues we will post regular progress photos, until then here is a sneak preview.



For further information or to discuss how we could help your project please call us on 0141 447 0300